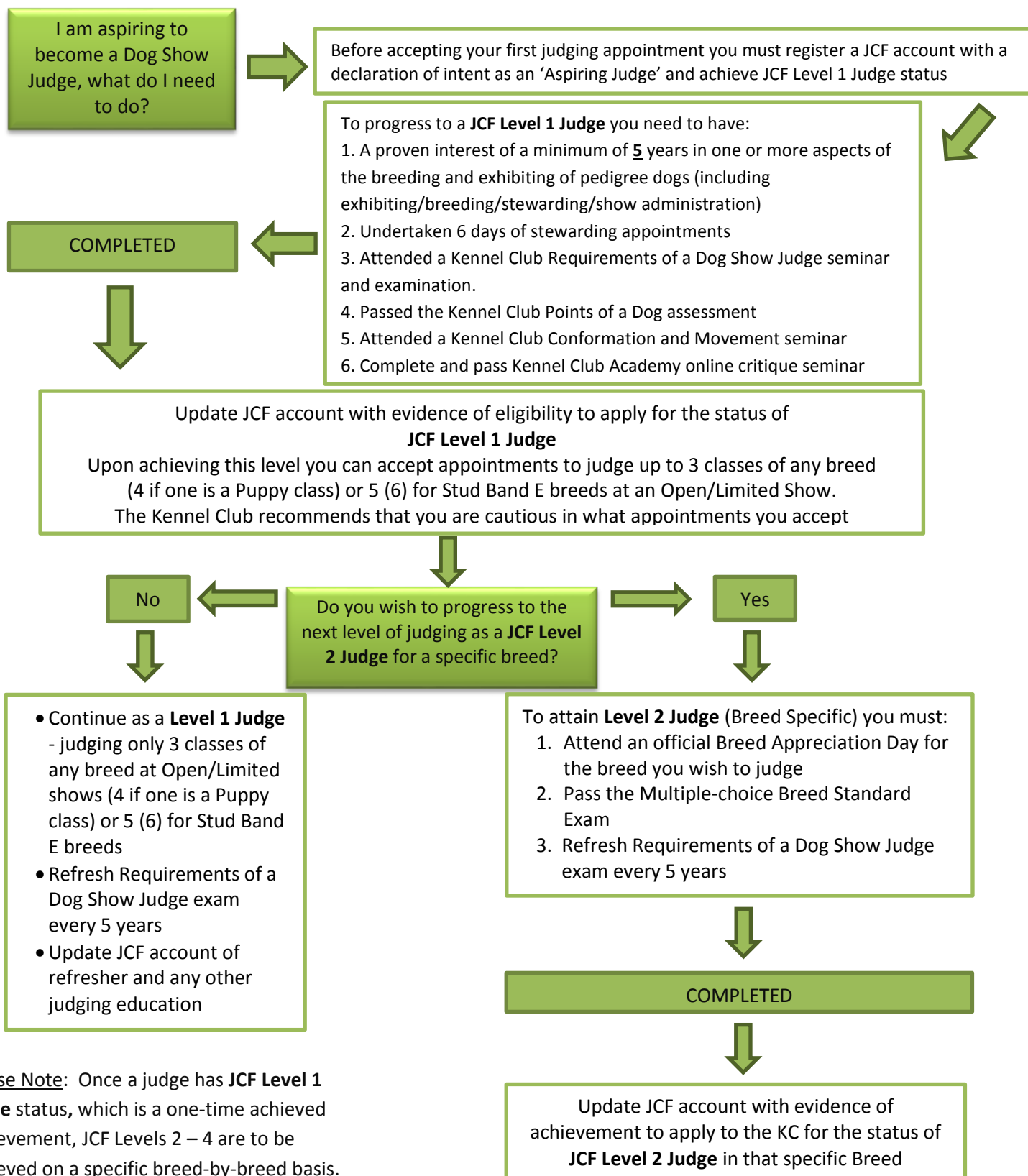


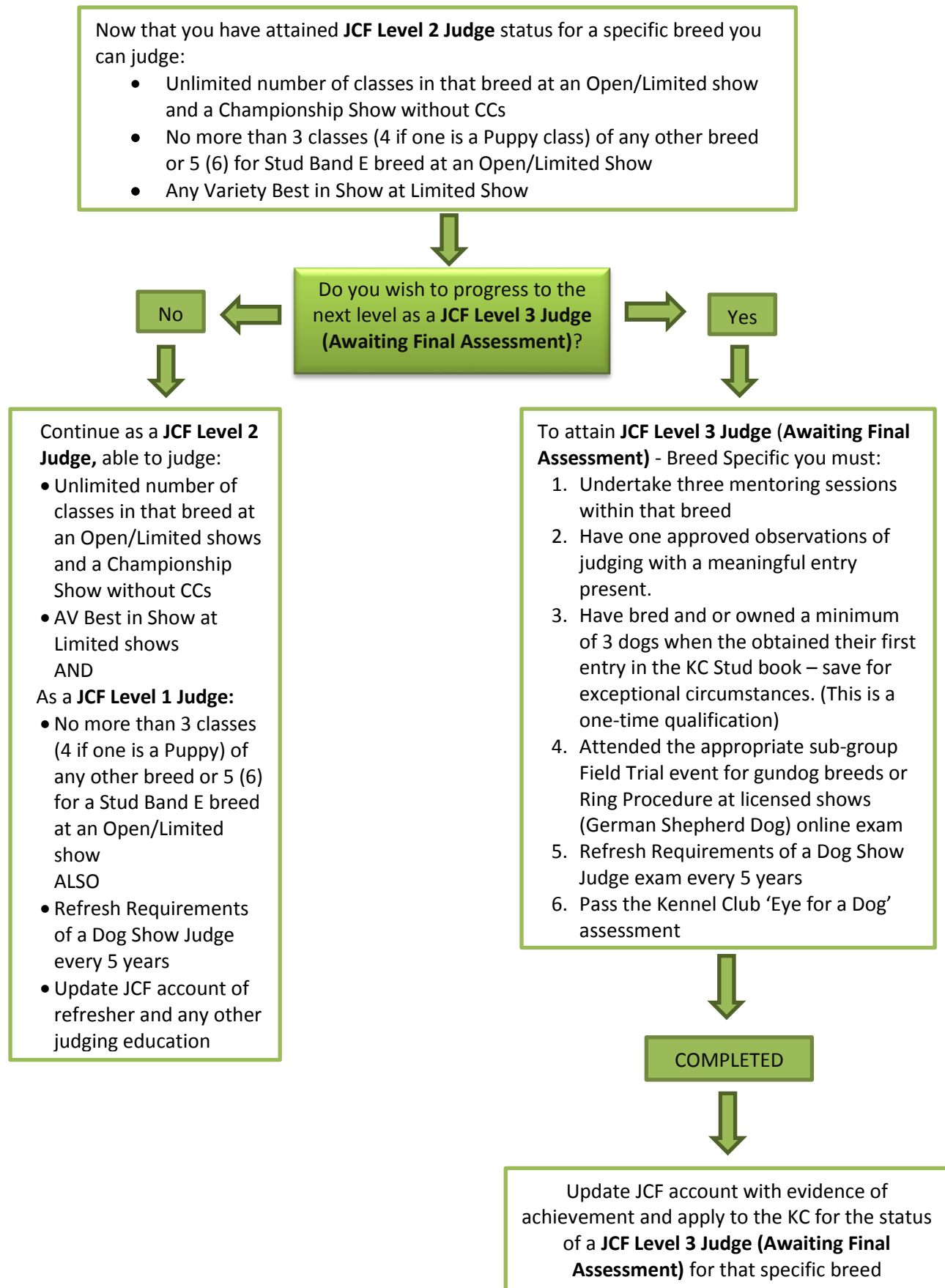
**Kennel Club Guide to being a Dog Show Judge (from 'Aspiring Judge' through to 'All Breeds Judge')**



**Please Note:** Once a judge has **JCF Level 1 Judge** status, which is a one-time achieved achievement, JCF Levels 2 – 4 are to be achieved on a specific breed-by-breed basis.

It is, therefore, feasible for a judge to be at different levels in different breeds at the same time.

**Kennel Club Guide to being a Dog Show Judge (from 'Aspiring Judge' through to 'All Breeds Judge')**



**Kennel Club Guide to being a Dog Show Judge (from 'Aspiring Judge' through to 'All Breeds Judge')**

Now that you have attained **JCF Level 3 Judge (Awaiting Final Assessment)** in a specific breed you can continue to judge the following whilst waiting to be assessed:

- Unlimited number of classes in that breed at an Open/Limited show and a Championship Show without CCs

**AND**

- No more than 3 classes of any other breed (4 if one is a Puppy) or 5 (6) for Stud Band E breeds as a Level 1 Judge at an Open/Limited Show

