



## THE KENNEL CLUB

*Making a difference for dogs*

### Governance & Education

The Kennel Club, Clarges Street, London W1J 8AB

Telephone 01296 318540

[www.thekennelclub.org.uk](http://www.thekennelclub.org.uk)

All information is correct at time of printing

# TRAINING BOARD

## POINTS OF THE DOG ASSESSMENT

### GUIDELINES FOR ASSESSMENT CANDIDATES

1. The aim of this Assessment is to demonstrate that aspiring judges are totally familiar with the:
  - a. POINTS OF THE DOG
  - b. STRUCTURE OF THE DOG
  - c. CONVENTIONAL MEASUREMENTS OF THE DOG.
2. The dog is NOT being evaluated for QUALITY OR BREED TYPE by this assessment method.
3. The candidate will "go over" the dog, starting at the nose and finishing with the tail, as is normal procedure in the show ring. Whilst doing so, the candidate will be prompted by the Assessor to indicate and confirm the POINTS, STRUCTURE and CONVENTIONAL MEASUREMENTS of the dog.
4. Dogs may be evaluated on a table or on the floor, whichever the candidate prefers. All dogs should preferably be short-coated, as this will make it easier for candidates to indicate the various points of the dog.
5. A line drawing of the dog with 40 points indicated is included within this form, together with a line drawing indicating Structural Balance and Conventional Measurements. These drawings are to be available well in advance of the assessment in order for the candidate to prepare and to practice going over a dog.
6. Candidates should be directed to the Kennel Club Academy and glossary of terms for pre-assessment learning. A practice 'drag and drop' exercise is available on the Kennel Academy website.

### ASSESSMENT PROCEDURE

7. Kennel Club Accredited Trainers for Points of the Dog, who have been specifically trained for the purpose will act as Assessors.
8. In all cases, before an assessment session commences the Assessor will give a briefing and a demonstration on how the Assessment will be conducted and answer any questions.
9. The Assessor will assess each candidate individually. As the candidate "goes over" the dog and having been prompted by the Assessor to indicate the various points required, the marking sheet should only indicate those points missed by the candidate, or indicate where further clarification is required. The sheet can also be used in giving feedback to the candidate.
10. Each candidate will be given approximately 10 minutes in which to complete the Assessment.
11. In the event that the candidate gives an incorrect answer or is unclear on any particular point, they will be asked to clarify their answer. This should be done when the candidate has completed the relevant section of the Assessment. If the clarification is still unclear this will be marked as an incorrect answer and one mark will be deducted from the total.
12. The Assessment will be private and confidential and to put the candidates at their ease be, undertaken in a relaxed and informal manner. The candidate will be given their result at the end of their Assessment. The pass mark is set at 46 out of 50. Each successful candidate will be given a Kennel Club Certificate on completion of the Assessment.
13. In the event that the candidate is unsuccessful, the Assessor will give feedback directly to the candidate, indicating the incorrect answers, giving the candidate the opportunity to go over the points, with the Assessor, using the dog upon which the Assessment was performed.
14. If unsuccessful the candidate may re-take their assessment at a later date until successful.

<b>NAME OF CANDIDATE</b>	<b>PLEASE COMPLETE IN BLOCK CAPITALS AND INK</b>										
MR/MRS/MISS/MS											
ORGANISING BODY											
DATE											
ACCREDITED TRAINER											

Your privacy is very important and we retain your data in accordance with our Privacy Notice which can be found on the Kennel Club website [www.thekennelclub.org.uk](http://www.thekennelclub.org.uk).

## MARKING SHEET FOR POINTS OF THE DOG ASSESSMENT

POINTS OF THE DOG			
<b>HEAD AND NECK</b>		<b>BODY</b>	
1. Skull		21. Topline	
2. Occiput		22. Ribcage (shape and length)	
3. Stop		23. Brisket	
4. Lips (flews)		24. Underline	
5. Dentition		25. Coupling	
6. Eyes		26. Loin	
7. Nose		27. Flank	
8. Ears		<b>REAR QUARTERS</b>	
9. Neck		28. Point of buttock	
10. Throat		29. Croup	
<b>FOREQUARTERS</b>		30. Shoulder (Joint)	
11. Withers		31. Forearm	
12. Forechest		32. Elbow (Joint)	
13. Shoulder-blade (length and layback)		33. Forearm and thigh	
14. Point of Shoulder (Joint)		34. Forearm and thigh (Joint)	
15. Upper Arm (length and return)		35. Forearm and thigh (Joint)	
16. Elbow (Joint)		36. Forearm and thigh (Joint)	
17. Forearm		37. Forearm and thigh (Joint)	
18. Wrist (Joint)		38. Set on of tail	
19. Front pastern		39. Tail	
20. Front foot		40. Male – check for testicles	

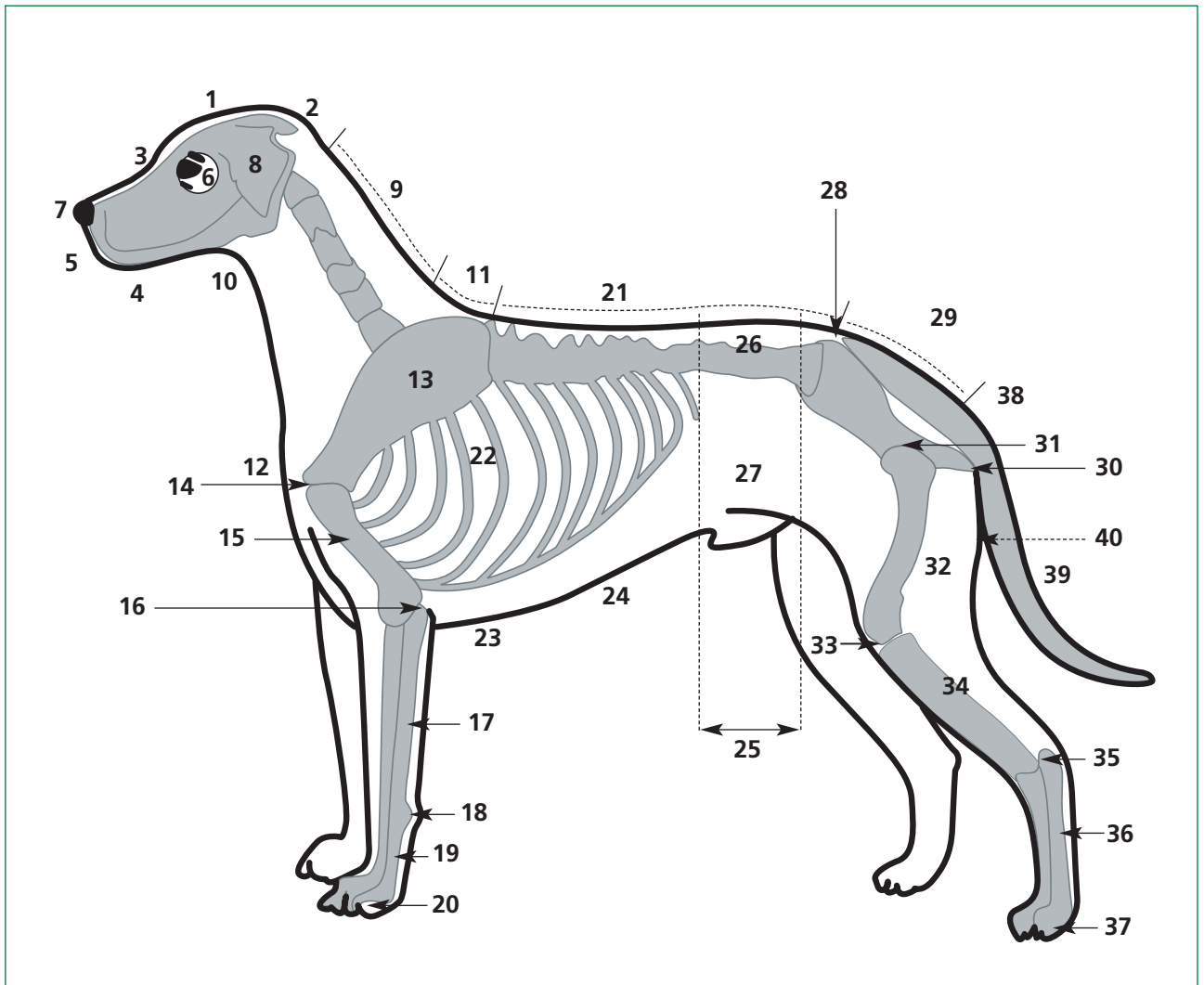
STRUCTURAL BALANCE OF THE DOG (easily for reference for approximate angulation)	
<b>FRONT ANGLULATION ASSESSMENT</b>	<b>REAR ANGLULATION ASSESSMENT</b>
41. A. Uppermost tip of shoulder blade	44. D. Pin bone
42. B. Point of shoulder (Joint)	45. E. Point of buttock
43. C. Elbow (Joint)	46. F. Stifle (Joint)
	47. G. Hock (Joint)

CONVENTIONAL MEASUREMENT	
48. H. Height = Highest point of withers in a vertical line to the ground	
49. I. Body Length = B. (Point of shoulder) to E. (point of buttock)	
50. J. Body depth (withers to Hock) and K. Leg Length (Elbow to Ground)	

REMARKS	

KENNEL CLUB ACCREDITED TRAINER'S SIGNATURE	<b>PASS</b> <b>FAIL</b>
--	----------------------------

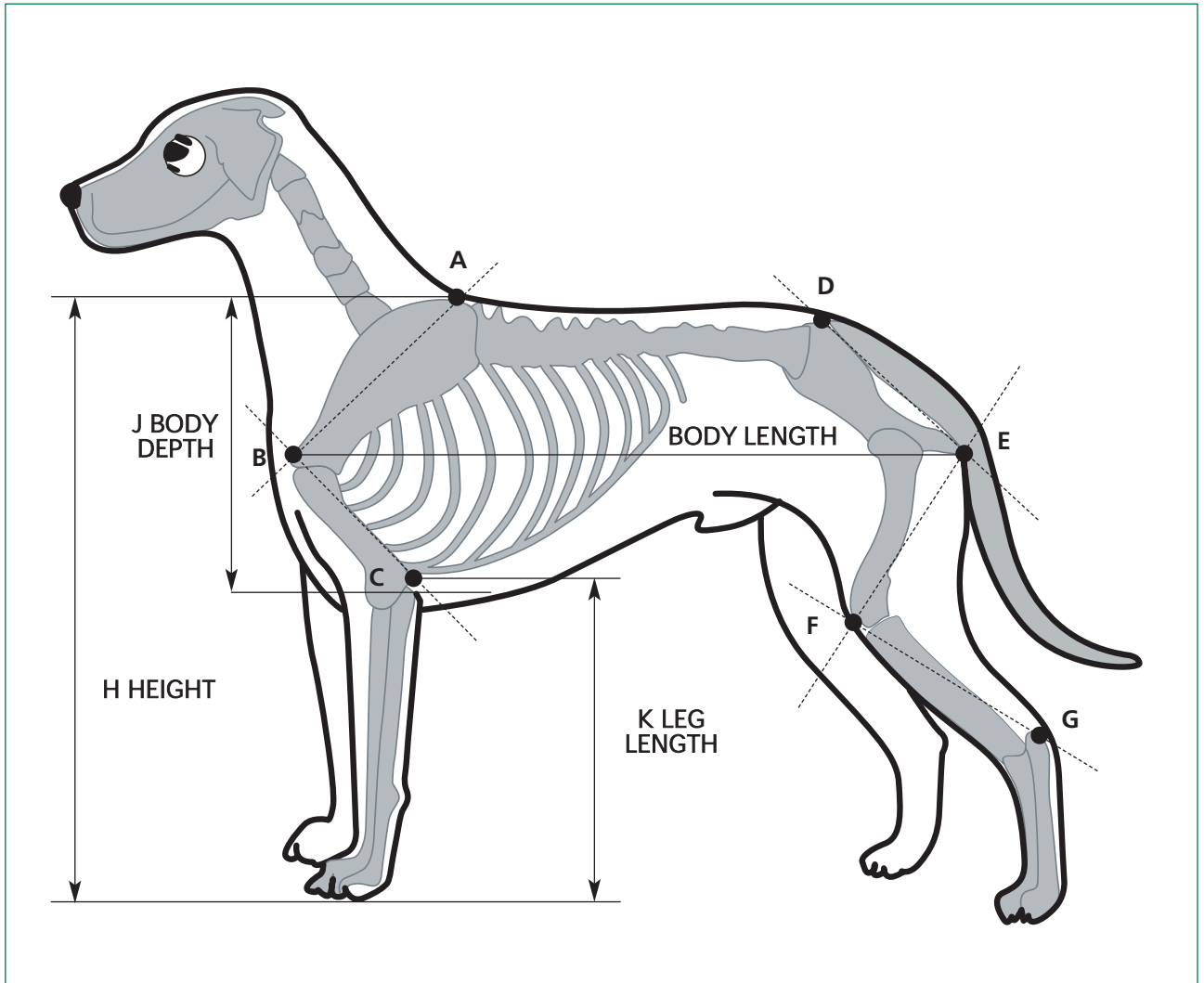
## POINTS OF THE DOG



1. SKULL	9. NECK	17. FOREARM	25. COUPLING	33. STIFLE (Joint)
2. OCCIPUT	10. THROAT	18. WRIST (Joint)	26. LOIN	34. SECOND THIGH
3. STOP	11. WITHERS	19. FRONT PASTERNS	27. FLANK	35. HOCK (Joint)
4. LIPS (FLEWS)	12. FORECHEST	20. FOOT (FRONT)	28. PIN BONES	36. REAR PASTERNS
5. DENTITION	13. SHOULDER-BLADE (LENGTH AND LAYBACK)	21. TOPLINE (WITHERS TO PINBONES)	29. CROUP	37. FOOT (REAR)
6. EYES	14. POINT OF SHOULDER (Joint)	22. RIBCAGE (SHAPE, DEPTH AND LENGTH)	30. POINT OF BUTTOCK	38. SET ON OF TAIL
7. NOSE	15. UPPER ARM (LENGTH AND RETURN)	23. BRISKET	31. HIP (Joint)	39. TAIL
8. EARS	16. ELBOW (Joint)	24. UNDERLINE	32. FIRST THIGH	40. MALE – CHECK FOR TESTICLES

## STRUCTURAL BALANCE OF THE DOG

Easily found points of Reference for Approximate Angulation



FRONT ANGULATION ASSESSMENT	REAR ANGULATION ASSESSMENT	CONVENTIONAL MEASUREMENTS
41. A. UPPERMOST TIP OF SHOULDER BLADE	44. D. PIN BONE	48. H. HEIGHT = HIGH POINT AT WITHERS IN A IN VERTICAL LINE TO THE GROUND
42. B. POINT OF SHOULDER (Joint)	45. E. POINT OF BUTTOCK	49. I. BODY LENGTH = B (POINT OF SHOULDER) TO E (POINT OF BUTTOCK)
43. C. ELBOW (Joint)	46. F. STIFLE (Joint)	50. J. BODY DEPTH (WITHERS TO BRISKET) AND K. LEG LENGTH (ELBOW TO GROUND)
	47. G. HOCK (Joint)	