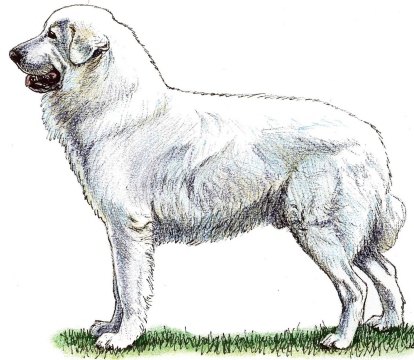


# Maremma Sheepdog



## MAREMMA SHEEPDOG

The white sheepdog of Northern Italy were mentioned by the Roman writer Varo in 100BC and it is thought that the Maremma is the result of a cross between two of these early type, the herder of Abruzzes and the herder of the Maremma plains. The seasonal movement of flocks between grazing grounds is thought to have resulted in the Maremma as we know it today. The breed is the result of the crossing of localised breeds, similar to the origins of the Lancashire Heeler.

The Maremma can still be seen fulfilling its original purpose in Northern Italy.

---

## What health screening is currently relevant?

Kennel Club Accredited Breeders must use, or are strongly recommended to use, the following screening schemes and/or advice for sires and dams:

- **BVA/KC Hip Dysplasia Scheme**



ACCREDITED BREEDER SCHEME