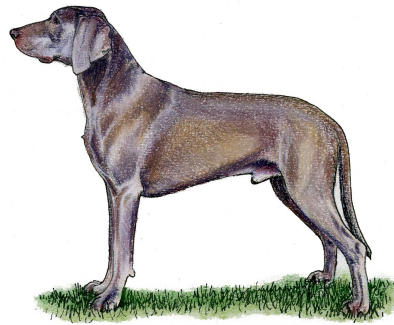


Weimaraner



The silver-grey coat of the Weimaraner has earned the epithet of the "Grey Ghost". The breed was created at the German Court of Grand Duke Karl August of Weimar where it was developed as a pointing dog for the nobility in the early 19th century but there is a dog of Weimaraner type in a Van Dyke portrait three centuries before this date.

The nobility of Weimar wished to retain the dog as exclusive to the elite classes and a club was set up with strict enforcement of breeding and ownership. If a dog was sold to a non-member, the dog was secretly sterilised before passing it on. It was not until the advent of the Second World War, that the breed became better known outside of Germany with some exports to the USA and the UK. From that time the breed's popularity soared with much admiration of its skills in the hunting field. The breed was first seen in the UK in the 1950's and he is now very popular in the show ring.

The breed also has a long-haired variety, which is much less numerous.

What health screening is currently relevant?

Kennel Club Accredited Breeders must use, or are strongly recommended to use, the following screening schemes and/or advice for sires and dams:

- **BVA/KC Hip Dysplasia Scheme**
- **Bitches under two years not to produce a litter**
- **Bitches not to produce more than one litter in a twelve month period**



ACCREDITED BREEDER SCHEME