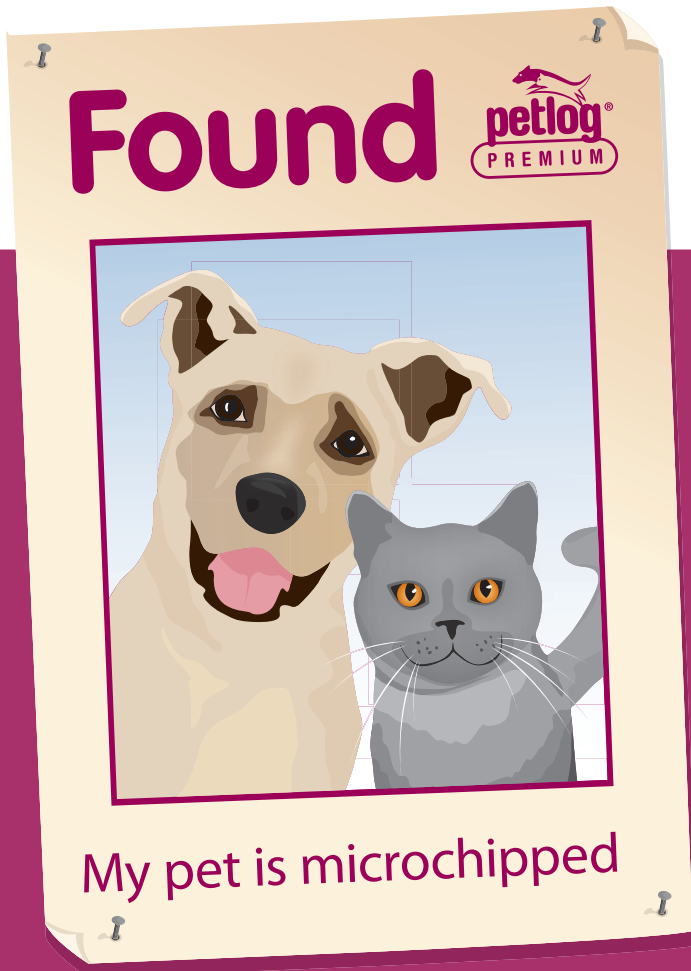




**THE KENNEL CLUB**  
Making a difference for dogs

## Information Guide

Why should I Microchip my pet?



## Why should I microchip my pet?

### What is Microchipping?

Microchipping is a simple safe and quick procedure. It can make all the difference in being reunited with your pet should they stray or go missing.

The microchip is the size of a grain of rice and the procedure, which can be carried out by a vet or trained implanter, takes only a few minutes and lasts a lifetime.



### How does a microchip help to reunite a lost pet?

Once your pet is microchipped, you and your pet's details are stored in a database along with the microchip's unique 15 digit code.

When a missing pet is found, an authorised user (for example a vet or dog warden) will scan the pet revealing the microchip's unique 15 digit code, and contact the microchip database providing the aftercare service. The database will perform some security checks before releasing your contact details to the authorised user – so that your pet can be reunited with you.

### ! IMPORTANT

**You should always call the microchip database where your contact details are held to notify them that your pet has gone missing. The microchip database should send out alerts to local vets and dog wardens on your behalf.**

## **Who runs the database service and how do I know which one I am/will be registered with?**

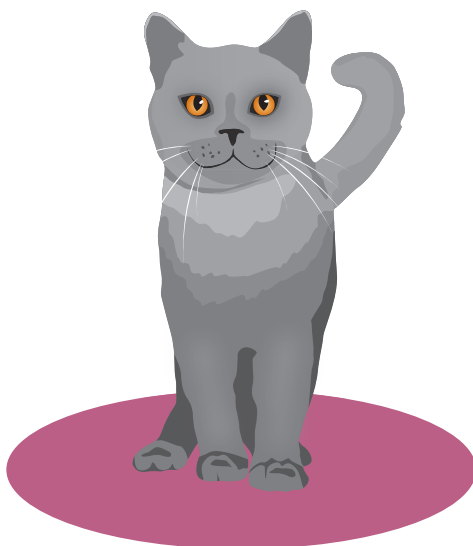
There are currently four microchip databases operating in the UK.

When a pet is Microchipped, registration paperwork is supplied and should provide the information you need to know about the database your pet is registered with.

It is your right as a pet owner to decide which database your pet's record is stored on, so please check with your vet/implanter which microchips they use and which database aftercare service they are aligned to.



If you are unsure of which database your pet is registered with, a quick look up list of Microchip suppliers is available online visit [www.petlog.org.uk](http://www.petlog.org.uk)



## Who is Petlog and why should I register my pet with them?

Petlog, managed by the Kennel Club, is the UK's largest independent database working with 11 of the UK's leading microchip suppliers:



- Bayer (Tracer)
- Datamars
- Micro-ID Ltd (Happy Pet)
- Identics
- Peddymark
- Virbac
- Jecta (Eezytrac)
- Pet Detect
- Pet-ID
- CoreRFID
- Fit & Fertile Ltd

Petlog is fully DPA (Data Protection Act), compliant, quality controlled with ISO 9001 and importantly defers income received to fulfil its lifetime promise to provide a lost and found service for each pet registered.

Petlog operates 24/7 365 days a year for lost and found pets and has been operating for over 16 years and now cares for over 6 million pets registered on its database. Petlog works closely with vets, welfare, breeders, dog wardens and trained implanters.

Last year Petlog answered over 119,000 calls in relation to lost and found pets.

Petlog is also a founder member of EPN (European Pet Network) ensuring that even when pets travel across Europe, they can be reunited if they stray.



For more information on the EPN (European Pet Network) visit [www.europetnet.com](http://www.europetnet.com)

## Where can I have my pet microchipped?

Most vets, welfare centres and training clubs offer a microchipping service. Be sure to question what database your microchip will be registered with – as this may affect your aftercare service.



For more information on where to get your pet chipped visit [www.petlog.org.uk](http://www.petlog.org.uk) or call **0844 4633 999**

## What does it cost to have my pet microchipped?

Costs vary so check with your local vet, welfare centre and in the case of young puppies, your breeder should be able to advise you.

Costs average between £10 and £30. Microchipping is a one off process and lasts for life. There is a small minimum fee included in the price of the microchip which secures a basic registration on the database – the rest of the fee covers the purchase of the Microchip and the Implanters time, expertise and resource.

## What further costs can I expect to pay?

The only further costs that you should expect to pay are to amend your details, for which there is a small fee. Alternatively many pet owners opt to upgrade their Petlog record to Petlog Premium. This allows unlimited amendments to the record for the life of the pet (in your ownership), provides a home page on the website to make updating quick and simple and has the ability of linking your other microchipped pets to the record if they are also registered with Petlog. You can also add holiday details and second/emergency contact details.

Also, if the worst should happen, an alert is sent out to authorised users within a 30 mile radius from where your pet went missing on your behalf.

The charge for Petlog Premium Membership is a one off lifetime fee of £10 via the web or £15 via paper or telephone. It is offered as a choice to pet owners, either at the point of Microchipping and registration, or as and when they need to update details for the first time.



Its easy to upgrade to Petlog Premium, simply call **0844 4633 999** or visit **[www.petlogpremium.org.uk](http://www.petlogpremium.org.uk)**

## How pet identification works



### **Importance of keeping contact details up to date.**

It is your responsibility as a pet owner to keep contact details up to date on the microchip database. You need to know that by law, if the animal warden finds a lost pet and cannot contact the owner within seven days, the pet can be re-homed.

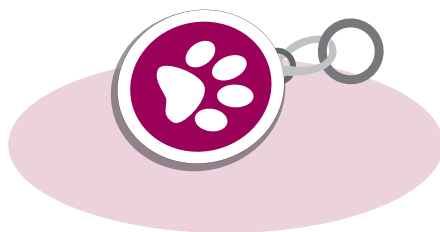
### **What more precautions can I take?**

- Take a photograph of your pet so that you can accurately describe it, should it go missing. Up to date photographs are also useful should you need to create a lost pet poster. These posters can be created on the Petlog website. [www.petlog.org.uk](http://www.petlog.org.uk)
- Take sensible precautions and never leave a dog unattended in a public place.
- Ensure all garden fencing and gates are secure.
- Get to know people locally, neighbours etc and other dog walkers if you own a dog, so that you form a secure network between you.
- Add the contact numbers for your vet and animal warden into your mobile phone
- Add the microchip number into your mobile phone.
- Ensure your pet has an ID tag, by law all dogs should wear a tag



## Identification Tags for dogs

Make sure your dog wears an identification collar tag with your current contact details written on it. The Control of Dogs Order 1992 advises that any dog in a public place must wear a collar with the name and address (including postcode) of the owner engraved or written on it, your telephone number is optional.



You can purchase engraved tags online from the Kennel Club visit [www.thekennelclubshop.org.uk](http://www.thekennelclubshop.org.uk)

## Dog owners be aware

Under the Environmental Protection Act 1990, dog wardens are obliged to seize stray dogs. The police have discretionary power to seize stray dogs under the Dogs Act 1906. They are entitled to charge you fees before returning the dog.

## Remember

- If either the animal warden or the police seize your pet, then you will lose your legal rights to the dog after seven days and you risk the dog being re-homed. Therefore, if your dog strays, you should notify both your local animal warden and police immediately.

### Ways to help find your pet include

- Contact Petlog immediately – **0844 4633 999** or visit **www.petlog.org.uk**
- If you are a Petlog Premium member, Petlog will send out a **Lost Pet Alert** as one of the optional services to local vets, welfare centres and dog wardens within a 30 mile radius of where your pet was lost... and if you download mydog UK app you can send the lost pet alert direct from your smart phone.



Upgrade to Petlog Premium now by calling **0844 4633 999** or visit **www.petlogpremium.org.uk**

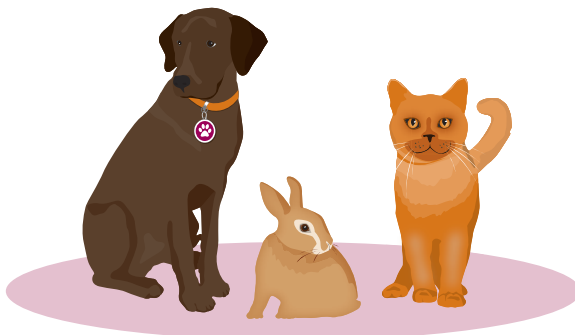
- Advertise in the 'Lost' section of your local newspaper and be sure to read the 'Found' advertisements.
- Call your vet and dog warden. If you believe that your pet has been stolen ensure that you report this to the police and get a crime reference number – and let Petlog know.
- Visit your local welfare centre. Ensure you look into each enclosure, as records may not always be accurate.
- Call radio stations that announce lost and found pets.
- Make posters/flyers and lots of them! Place them in pet shops, vets, supermarkets, restaurants, grooming parlours, dog clubs, local stores and post offices. For outdoor flyers you may need to get permission from your council. These can be created at **www.petlog.org.uk**

- Take a photograph of your pet every few months to ensure it will be recognisable on posters if it does stray.
- Dogs and cats are not always predictable and can stray long distances. Look everywhere and tell everyone.
- Make sure you keep a record of some useful numbers to call if you lose a pet, such as your local welfare centre, vet, neighbour, dog warden, police and, of course, Petlog.
- Social Media is a great way to help find a lost pet. There have been lots of success stories to date.
  - Create a group on **www.facebook.com** with pictures and descriptions for your pet. Invite all your friends to join and ask them to send to their friends.
  - Post the group on Petlog's Lost & Found Page – **www.facebook.com/petloglostfound** and other relevant pages, most people are happy to help and will repost for you if you ask.
  - If you don't have one already, set up a Twitter account – **www.twitter.com** make sure you follow @petloglostfound and similar organisations on Twitter as on Facebook.

“Tweet” the link to your Facebook Group and/or pictures of your pet with details (Tweets must be 140 characters or less) always put “pls RT” at the end of your Tweets – this is to ask others to “re-Tweet” your Tweet to send to their followers.



To find out more about the ways in Petlog can help you and your pet call **0844 4633 999** or visit **www.petlog.org.uk**





## Pet Lost? Pet Found with Petlog

**Petlog is a microchip reunification service for all pets:**

Telephone **0844 4633 999** or visit  
**[www.petlog.org.uk](http://www.petlog.org.uk)** to find out more about the  
ways in which this service can help you and your pet.



Visit **[www.thekennelclub.org.uk](http://www.thekennelclub.org.uk)**  
to find out more.



**THE KENNEL CLUB**

1-5 Clarges Street, Piccadilly, London W1J 8AB  
Telephone 0844 4633 980 Email [info@thekennelclub.org.uk](mailto:info@thekennelclub.org.uk)

**[www.thekennelclub.org.uk](http://www.thekennelclub.org.uk)**

Join the conversation:

**[@petloglostfound](https://twitter.com/petloglostfound)** **[facebook.com/petloglostfound](https://facebook.com/petloglostfound)**



**THE KENNEL CLUB**

*Making a difference for dogs*

The Kennel Club works to protect and promote the health and welfare of all dogs in the UK. We want happy, healthy dogs living long lives with responsible owners. All profits from the organisation go straight into funding the many programmes run in the best interest of dogs and dog owners and to support the Kennel Club Charitable Trust to re-invest into a wide variety of welfare and health programmes.

Anyone can register their dog with the Kennel Club. By registering you will demonstrate your commitment to your dog's well-being and to the health and welfare of all dogs. You can register online today at

**[www.thekennelclub.org.uk/dogregistration](http://www.thekennelclub.org.uk/dogregistration)**.

What ever your dog's needs, the Kennel Club is here to help and support you.

Find out more by contacting us on **0844 4633 980**, or visit our website at **[www.thekennelclub.org.uk](http://www.thekennelclub.org.uk)** to find out more about the wonderful world of dogs.

**Additional guides on a wide range of subjects are also available to download from our website at [www.thekennelclub.org.uk](http://www.thekennelclub.org.uk):**

- Asthma and your dog
- Breeding from your bitch
- Choosing and bringing home the right dog for you
- DNA profiling and parentage analysis services
- Do you know dog law?
- Do you know how to look after your dog in its senior years?
- Find a rescue dog
- Health screening and the Kennel Club
- How to breed dogs using artificial insemination
- How to get involved in fun activities and competitions with your dog
- How to get started with dog training
- How to register your dog with the Kennel Club
- Kennel Club endorsements
- Moving house with your dog
- Pet Insurance Guide for dog owners
- Road travel with your dog
- So you are thinking of working with dogs?
- Thinking of showing your dog in the UK?
- Thinking of using your dog as a stud?
- Travelling abroad with your dog